



Technomix
Spezialist für Sichtprüfverfahren

Corporate presentation |

Your points of contact



Thomas Kraus

Technical Management &
Executive Board



T: +49 (0)9548 - 9828 14
M: +49 (0)151 1884 1191



thomas.kraus@technomix.de



Dominik Breuer

Executive Board



T: +49 (0)9548 - 9828 24
M: +49 (0)151 2050 6488



dominik.breuer@technomix.de

WE ENSURE YOUR QUALITY

Because
the trained eye
sees more

Our areas of operation



Claims



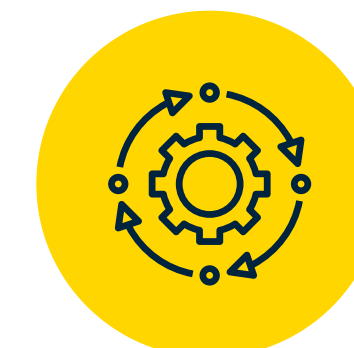
Difficult to verify
characteristics



Capacity
bottlenecks



Outsourcing



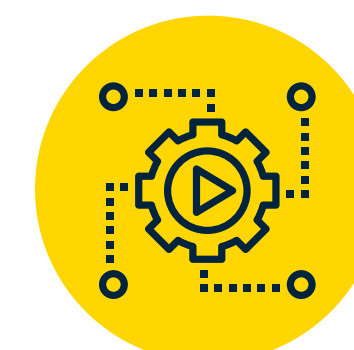
Follow-ups of
pseudo rejections



Customer
requirements



Process optimization



Automation



Safe-Launch-Phase

Facts & figures

5

testing facilities

100

Zeiss technoscopes

>150

employees

500K

pieces visually inspected
by hand per day

200 M

inspected pieces per year



TESTED

ACCORDING TO

DIN EN ISO 9001

DIN EN ISO 14001

EN 9100



Our service portfolio



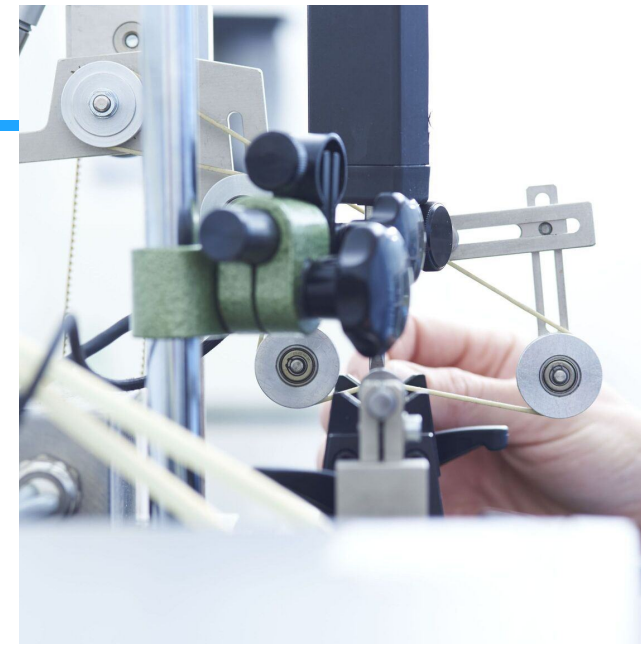
Manual visual inspection

- Technoscope testing
- Magnifier inspection
- Purely optical inspection
- Endoscope inspection
- Videoscope inspection



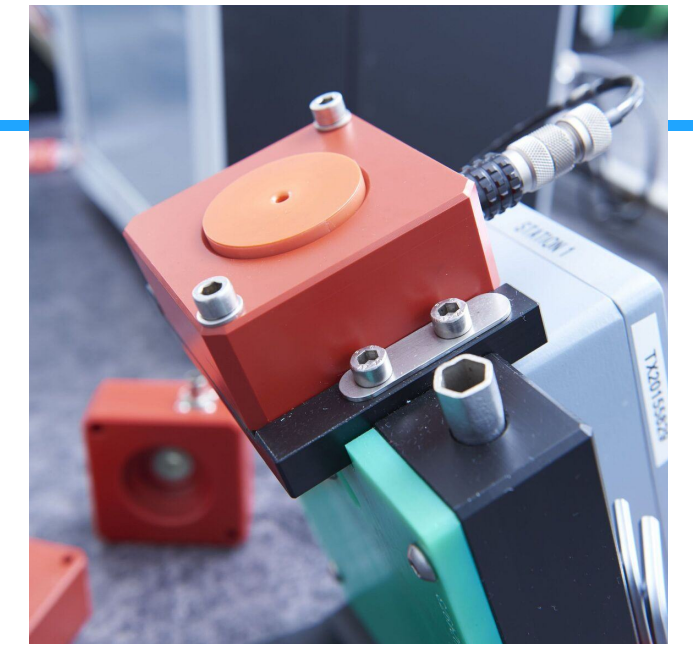
Fully automated camera inspection

- Geometry testing
- Defect testing
- Surface inspection
- Crack inspection
- Dimensional inspection



Dimensional inspection

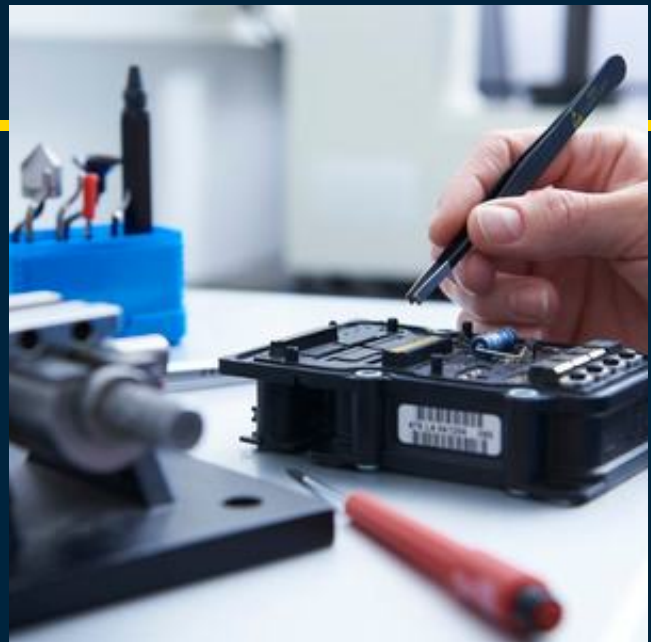
- Length inspection
- Surface inspection
- Concentricity inspection
- Micrometer inspection
- Gauge testing
- Angle testing



Material inspection

- Non-destructive eddy current testing
- Microstructural testing
- Crack testing
- Vickers destructive hardness testing

Full service at Technomix



Assembly

- Screwing
- Plugging
- Mounting
- Glueing
- Clipping
- Adjusting



Rework

- Grinding
- Drilling
- Deburring
- Brushing
- Cleaning
- Painting



Packaging

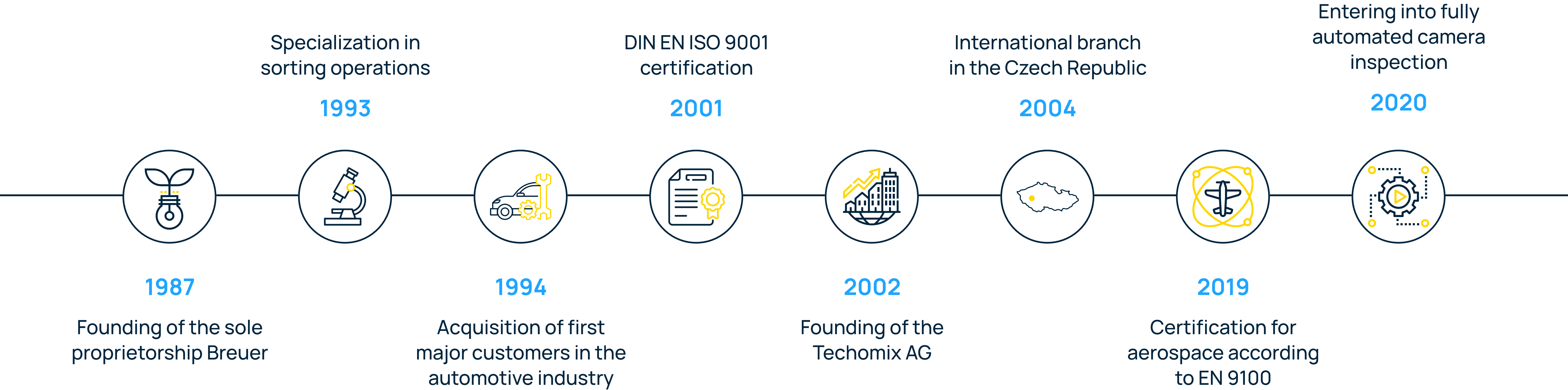
- Packing
- Blister belt packaging
- Bagging
- Welding
- Vacuum packaging
- Shrinking
- Labeling



Consulting

- Consulting
- Process adaptation
- Process optimization

Company history



Locations

TECHNOMIX AG

Gewerbegebiet Limbach 6
D - 96178 Pommersfelden

TECHNOMIX S.R.O

Ul. 28. října 68
CZ - 30100 Plzen



Our customers



AUTOMOTIVE



AEROSPACE



ELECTRONICS

Our quality assurance:

Your partner from A-Z

01 | Exchange of information
on product and error
patterns

02 | Clarification of general
conditions

03 | Development of tailored
solutions



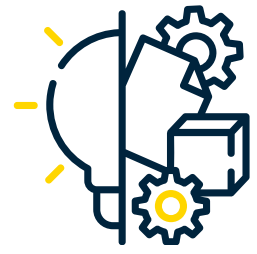
04 | Offer preparation

05 | Preparation of test
instructions, error catalogs
and training of test personnel

06 | Accompanying your product in-
house

Our logistics:

Agility is the name of the game



- Roofed delivery of goods with room for semi-trailers of up to 40 tons
- Just-in-time pickup and delivery of your products with in-house fleet or freight carriers
- Flexible adaptation to your individual delivery schedules (Web EDI)
- Complete customs clearance for international movement of goods
- Packaging according to your specifications



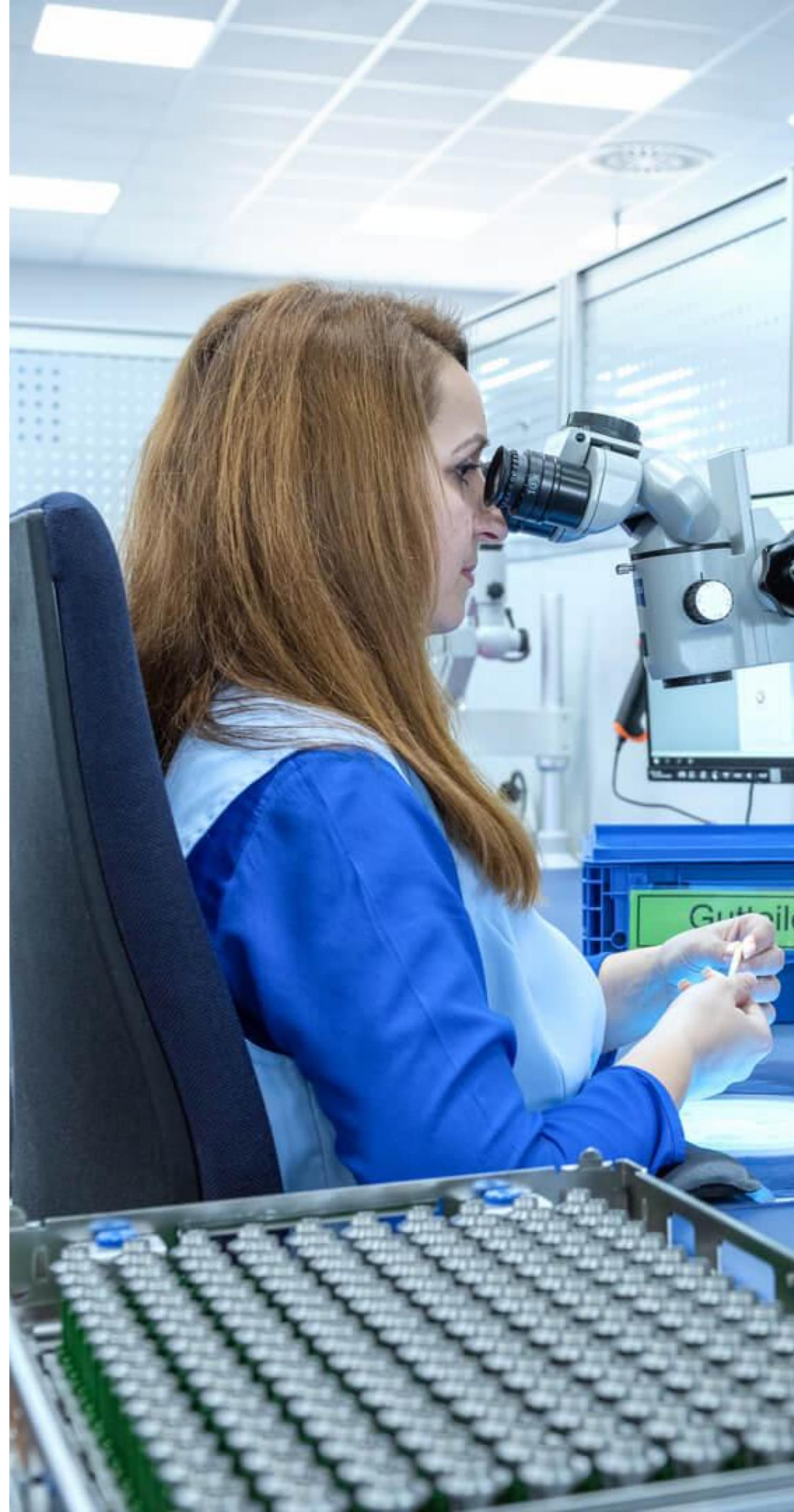
Our inspection staff:

The trained eye sees more

01 | Focus and performance test as a prerequisite for employment

02 | Sample work

03 | Familiarization and training with assigned mentor (4-6 weeks)



04 | Routine ophthalmologic vision tests

05 | Approval procedure of the testing personnel for products by internal MSA

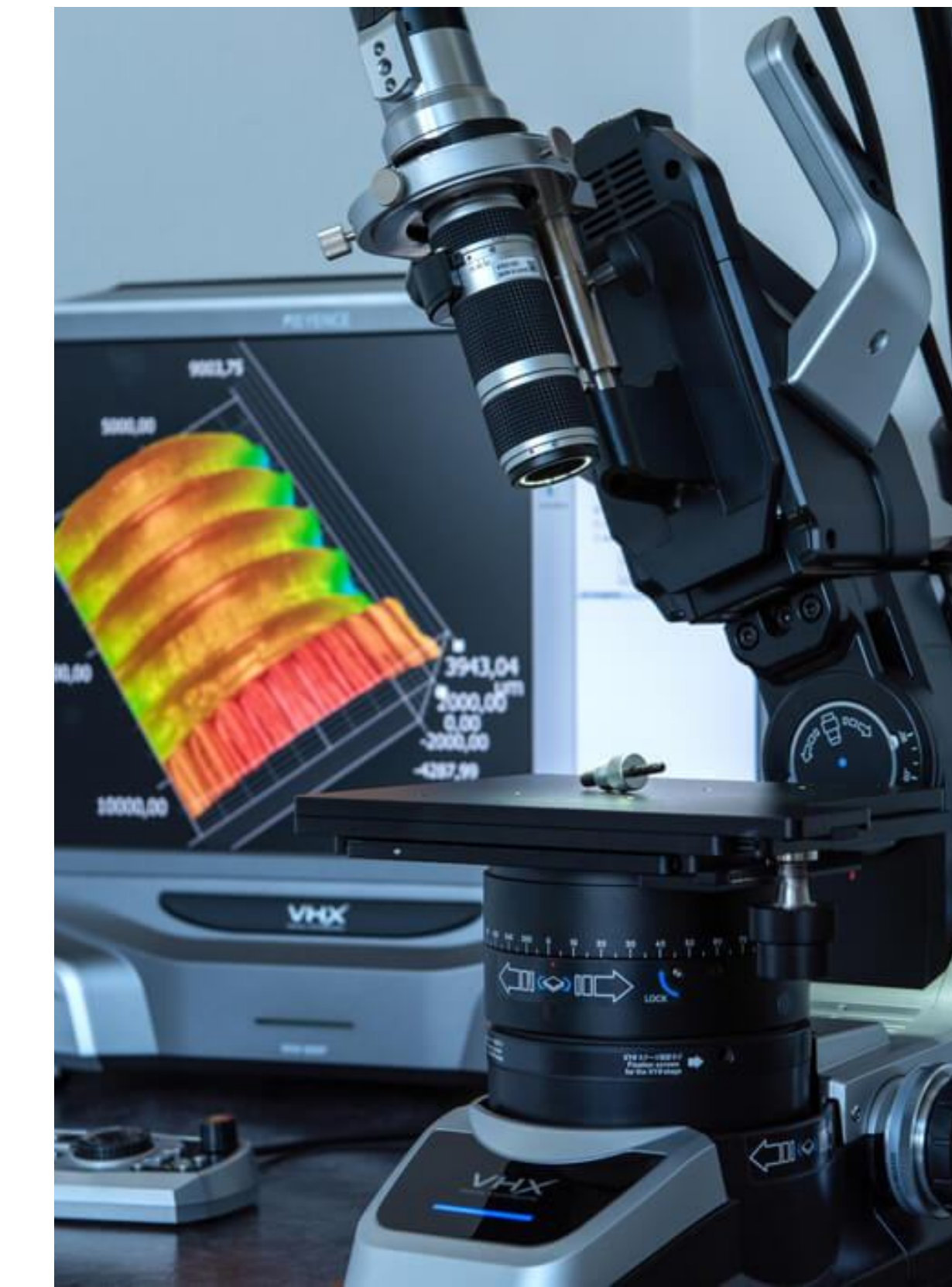
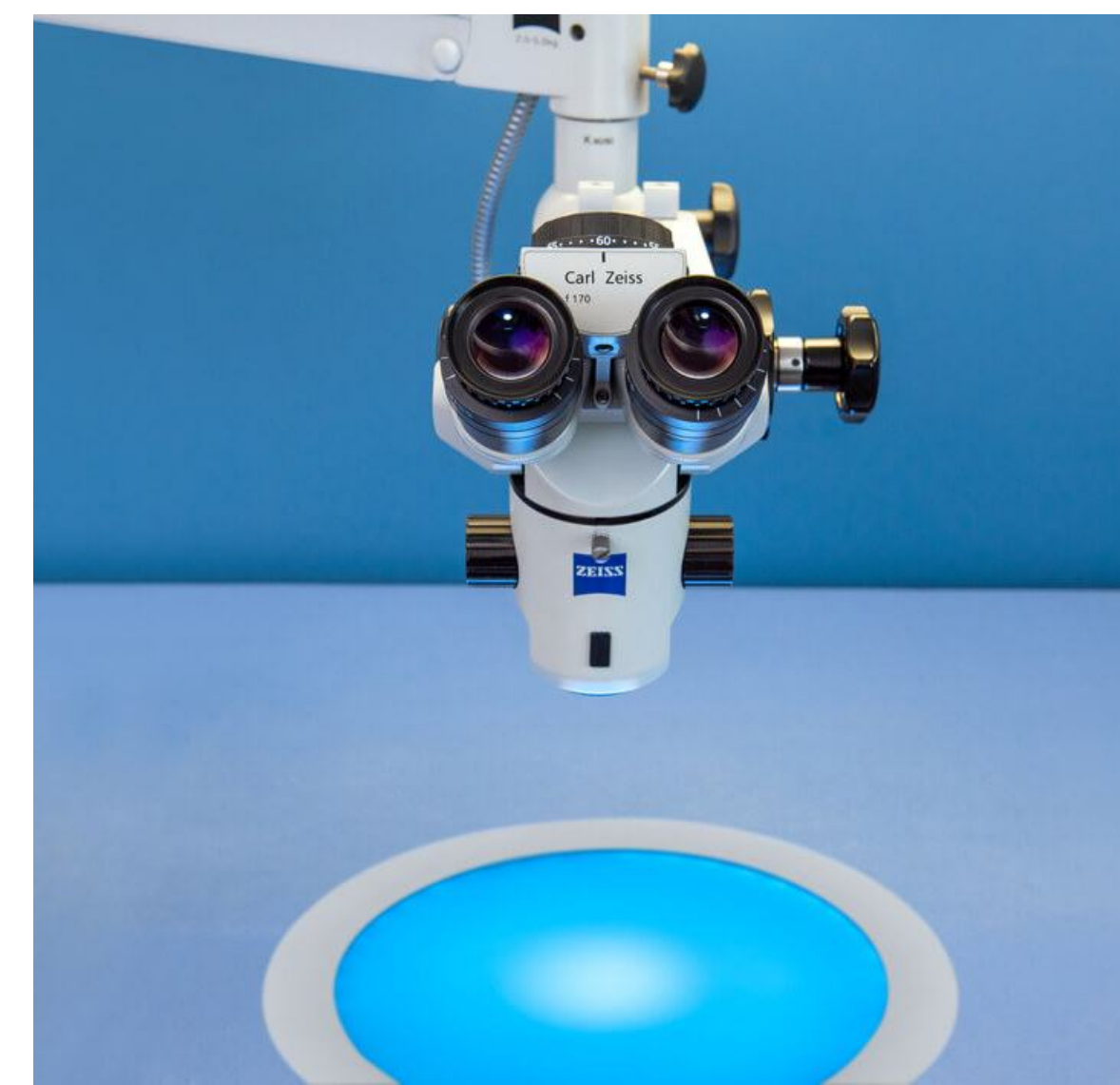
06 | Regular validation tests and determination of an individual PPM rate

Our testing equipment:

Manual visual inspection



- State-of-the-art precision equipment (technoscopes) from Zeiss and Leica (surgical microscopes)
- Adjustable 2x to 50x magnification available
- Magnifying glasses and testing without auxiliary tools
- Innovative equipment (backlight panels, touch screens)



The test space:

Ideal conditions for our
manual visual inspection



- Ergonomic workplace design
- Optimal illumination of workstations with up to 1000 lux
- Air-conditioning of the test room
- Error minimization and continuous optimization through the Poka-Yoke approach and a QM system



The test space:

ESD-shielded area

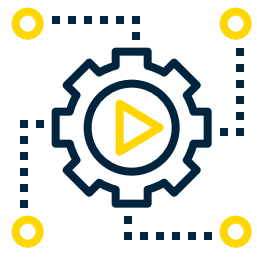


- Specially equipped ESD test room
- Full ESD protection zone (EPA)
- Airlock area with personal grounding tester
- Special personnel training

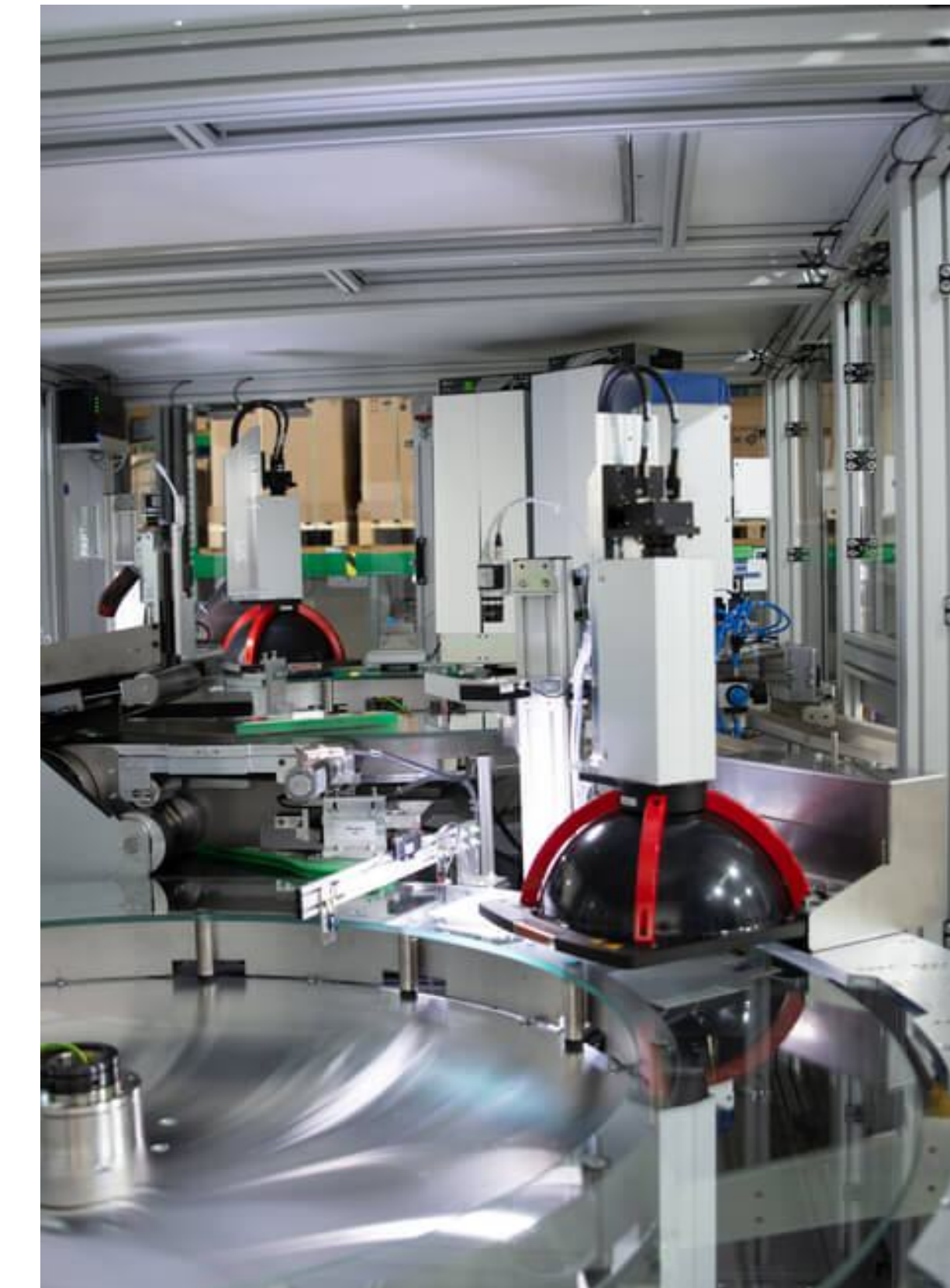
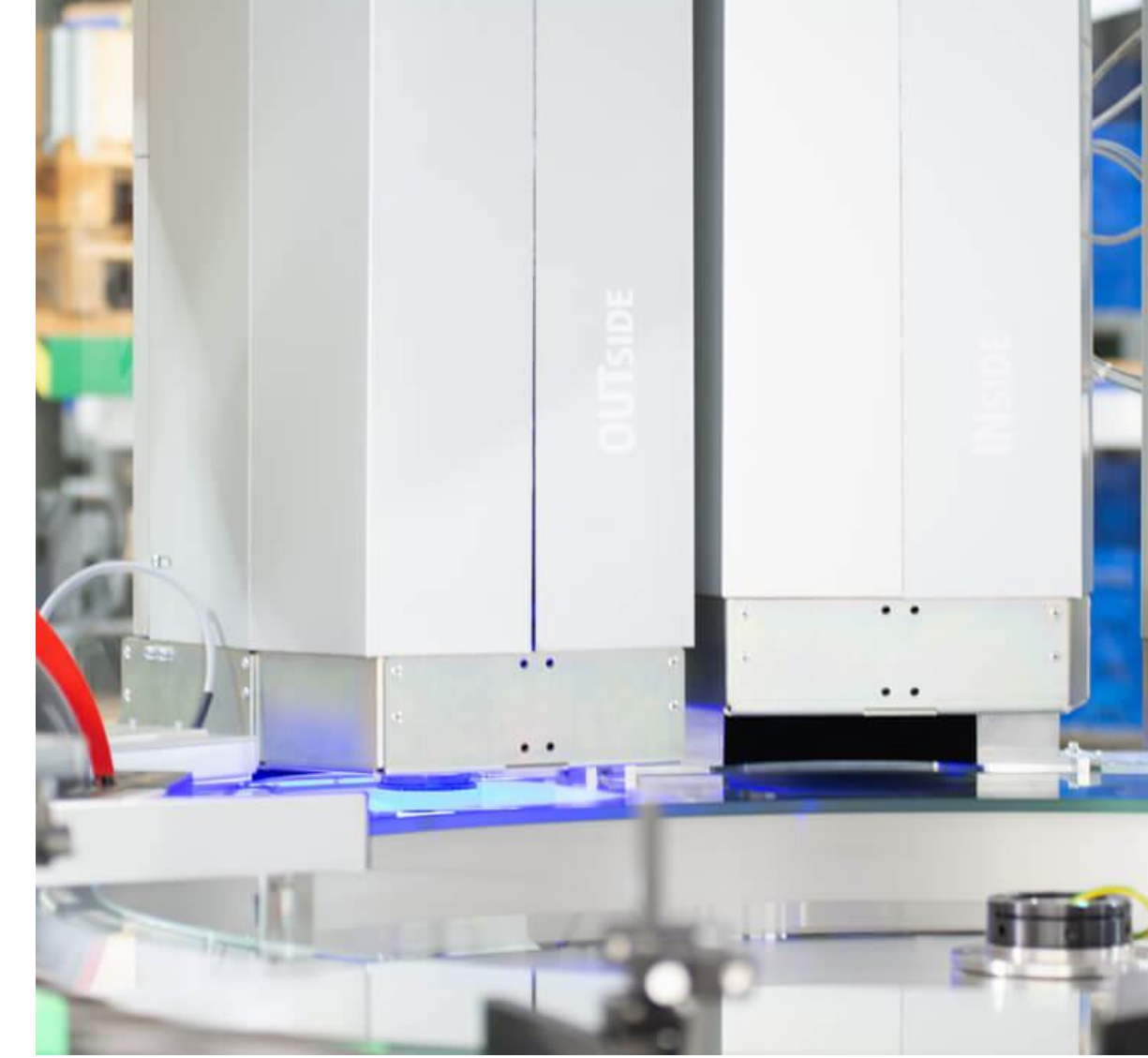


Automated inspection:

Optical monitoring at the highest level

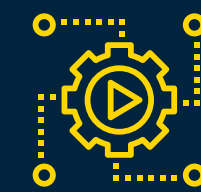


- High-speed double glass plate systems with turning unit
- Conducting geometry, defect, and thread inspections with maximum precision
- State-of-the-art inspection sensor technology, in particular Shape from Shading (SFS) technology
- Feeding via spiral conveyor (bulk material) or turntable (set material)





Advantages of automated inspection machines



Fully automated non-destructive inspection and sorting without manual handling



Cheaper, faster and more accurate optical inspection



Wide range of configuration options for the system in accordance with customer requirements



Testability of a wide range of materials



Highest processing speeds for large production batches



Fully automated sorting of parts into the categories "good", "bad" and "undefined"

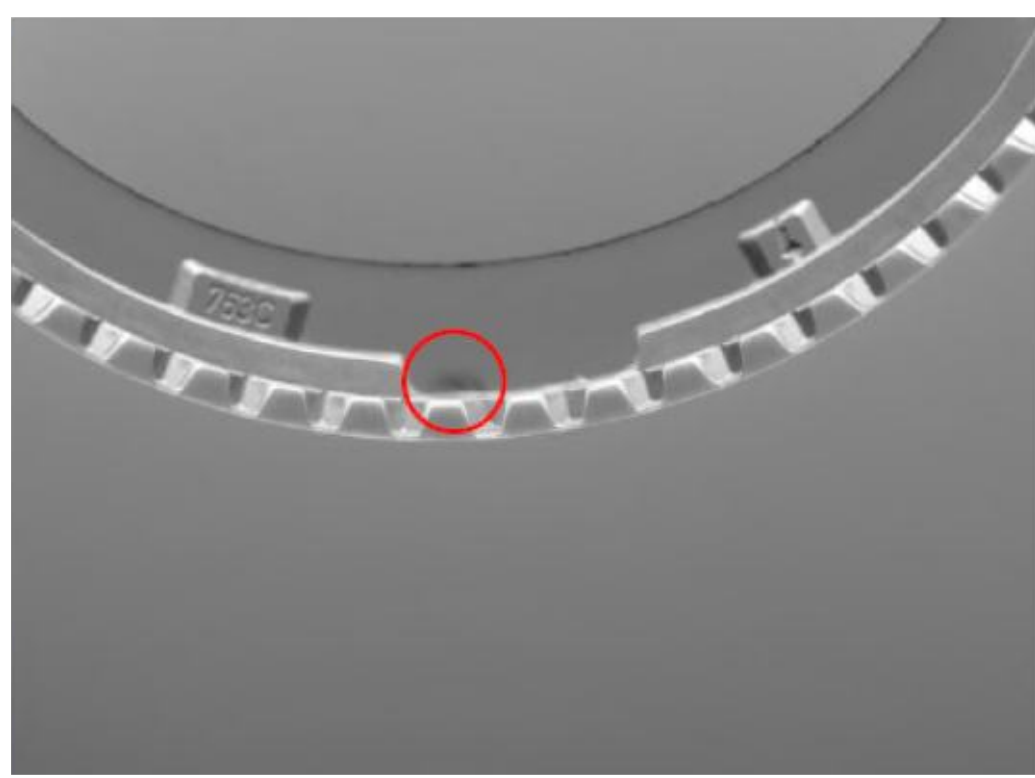
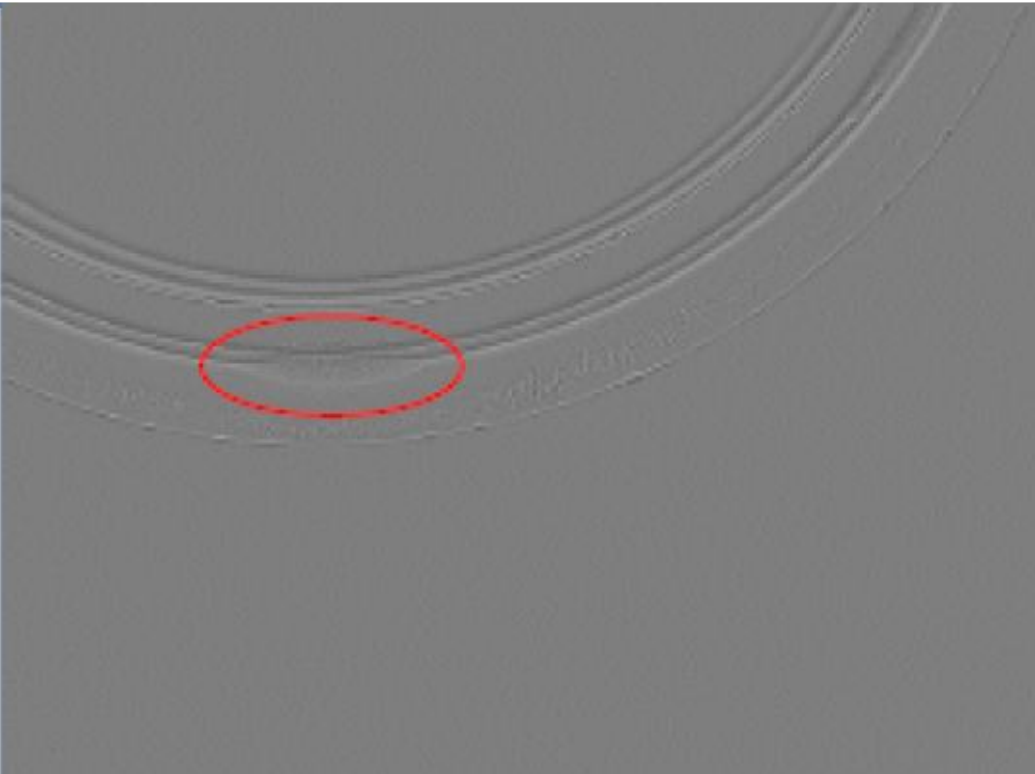
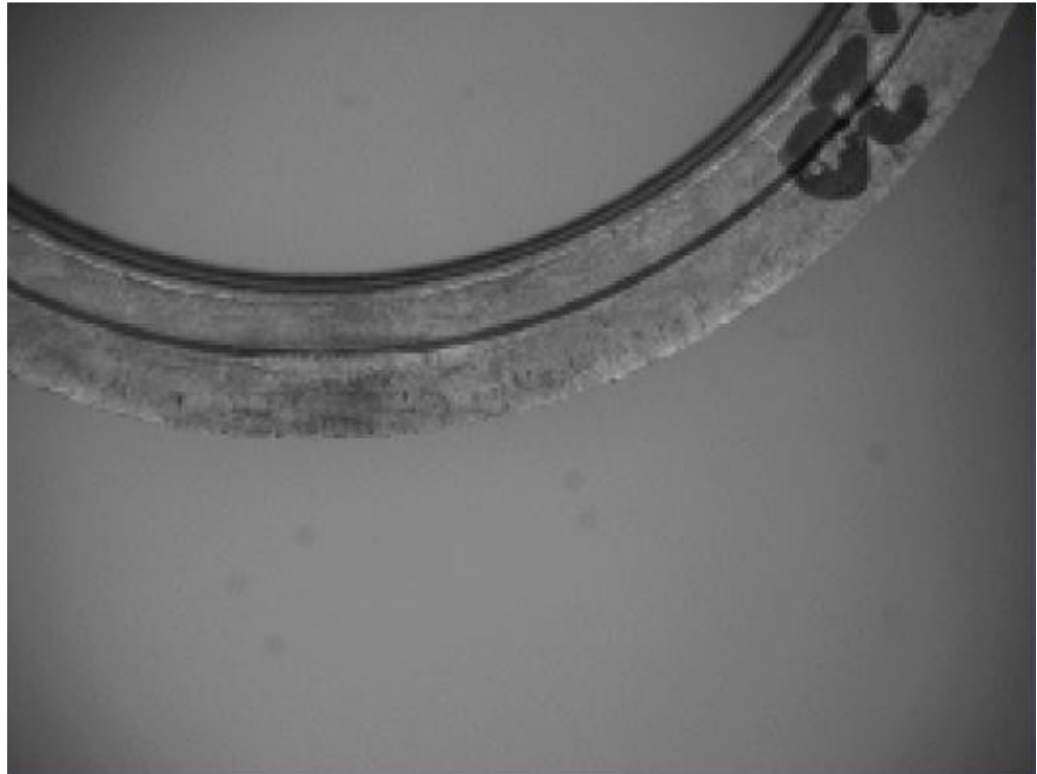
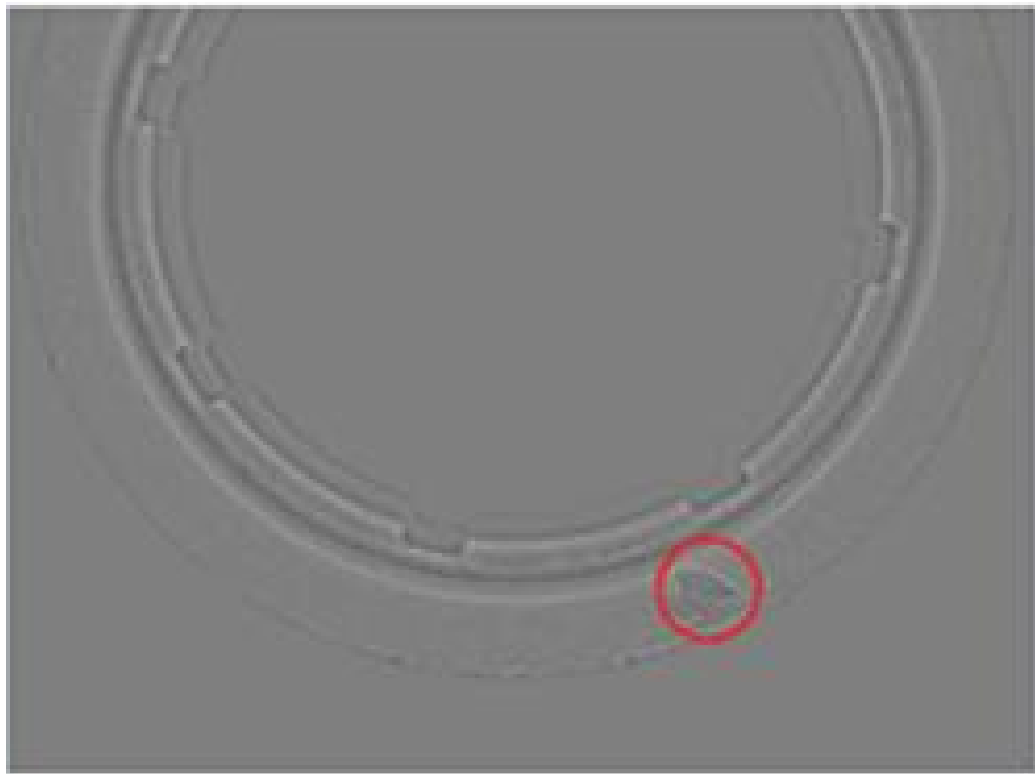
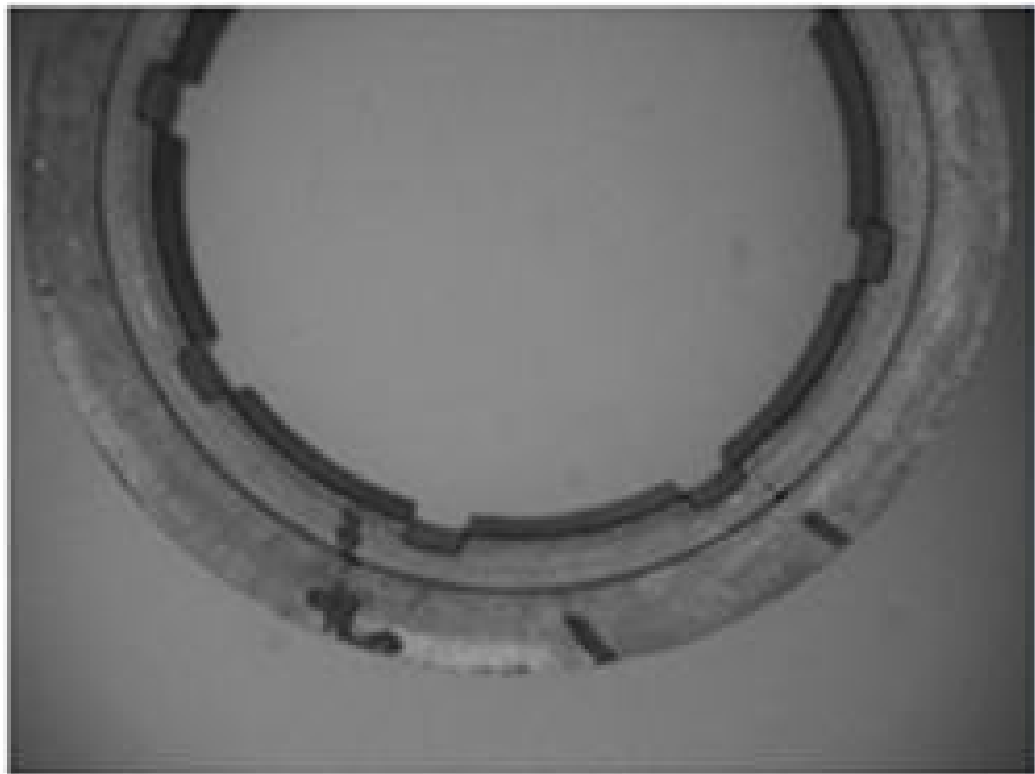
Facts and figures about the automated inspection machines

For rotationally symmetrical goods, our inspection systems offer a wide range of different sensors and configuration options:

- SFS sensor technology “top-side”
- SFS sensor technology “bottom-side”
- Interior sensor technology (inside of component)
- Exterior sensory technology (outside of component)
- Dimensional sensor (Outer and inner diameter)
- Sonic testing unit (crack testing)
- Inspection range (diameter in mm): 5-82 mm
- Inspection range (height in mm): 1-20mm
- Cycle time (parts per second): 0.5-1



Latest Shape from Shading (SFS) technology



Standard sensor technology

SFS sensor technology

Standard sensor technology

SFS sensor technology

© 2004 Blackwell Publishing Ltd *Journal of Internal Medicine* 255: 105–112

UNIT TAVI.02-XL



UNIT TAVI.02



Examples of possible inspection items (2)

UNIT TAVI.01



Inspection automation of your products:

The process

01 | Delivery of scrap and good components

02 | Feasibility check of the respective product

- a** | Walking test based on the geometric properties of the product
- b** | Programming the automated inspection machine to test your part
- c** | Preparing an application report based on the collected data



03 | Acceptance by the customer using MSA

04 | Start of serial testing

Conceptual design of customized units:

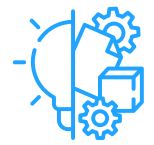
Supporting you with our network



Consulting in the field of automated inspection



Creating tailored solutions



Evaluating appropriate technology



Procuring the right manufacturing partners

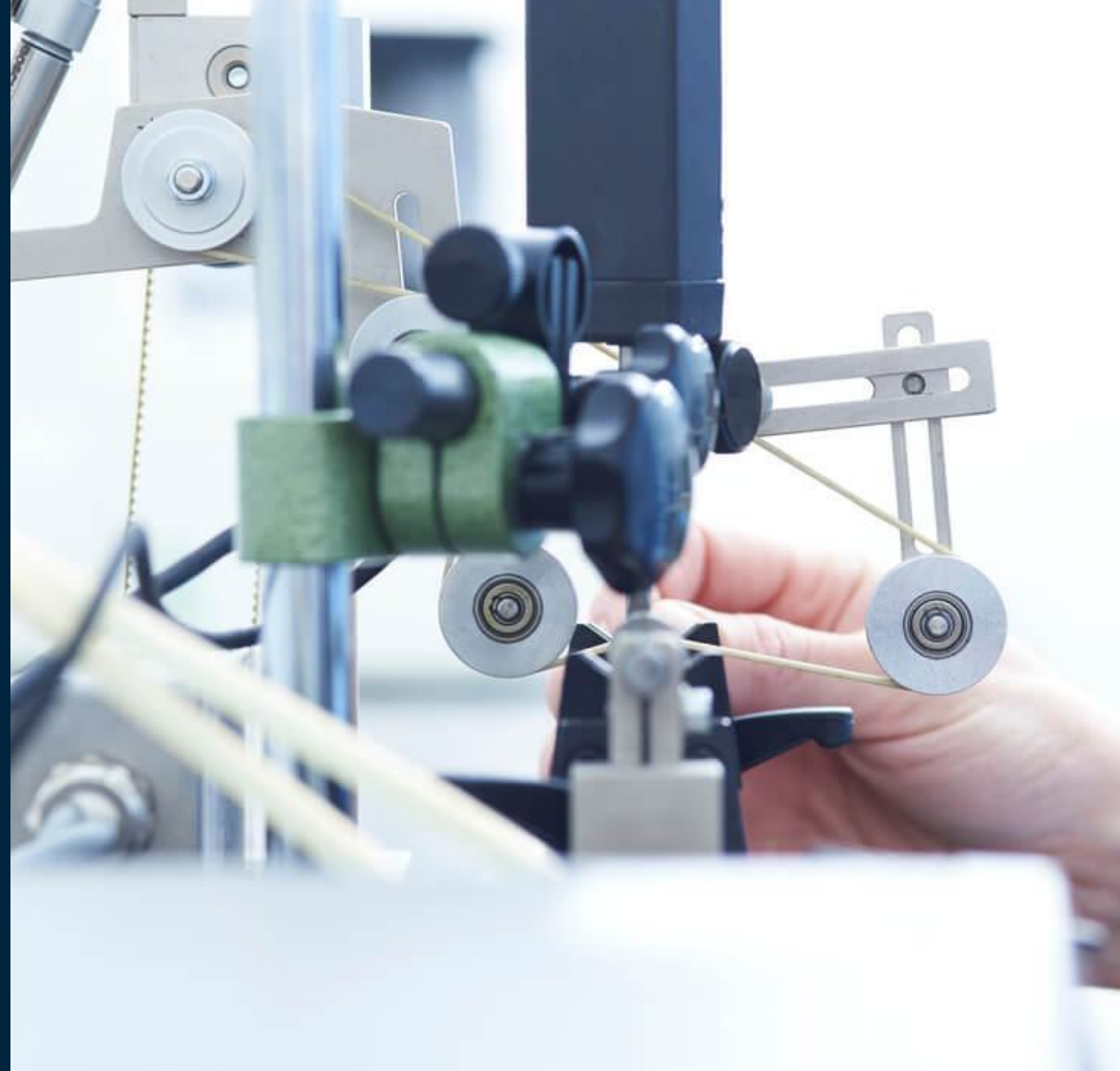


Conceptualizing automated inspection machines



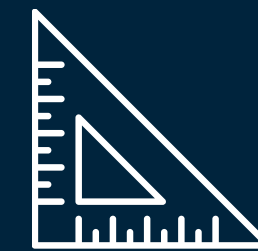
Project monitoring / project management





Dimensional inspection:

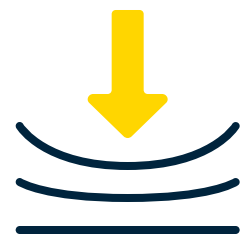
Quality with proper proportions



- Length inspection
- Surface inspection
- Concentricity inspection
- Micrometer inspection
- Gauge testing
- Angle testing

Materials testing:

It's the inner values that count

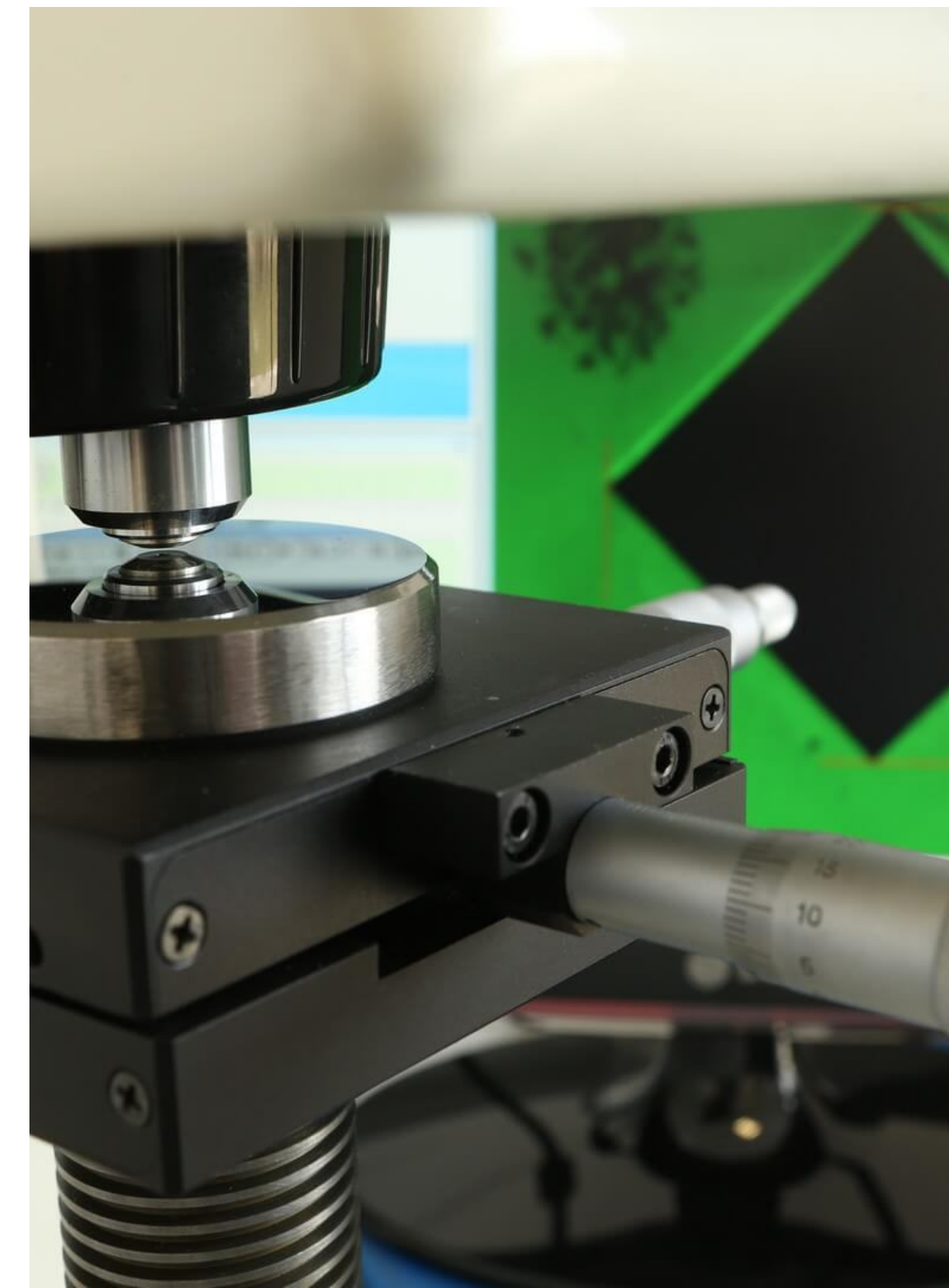


Non-destructive eddy current testing

- Microstructural inspection
- Hardness inspection
- Crack testing
- Grind burn inspection

Destructive hardness testing

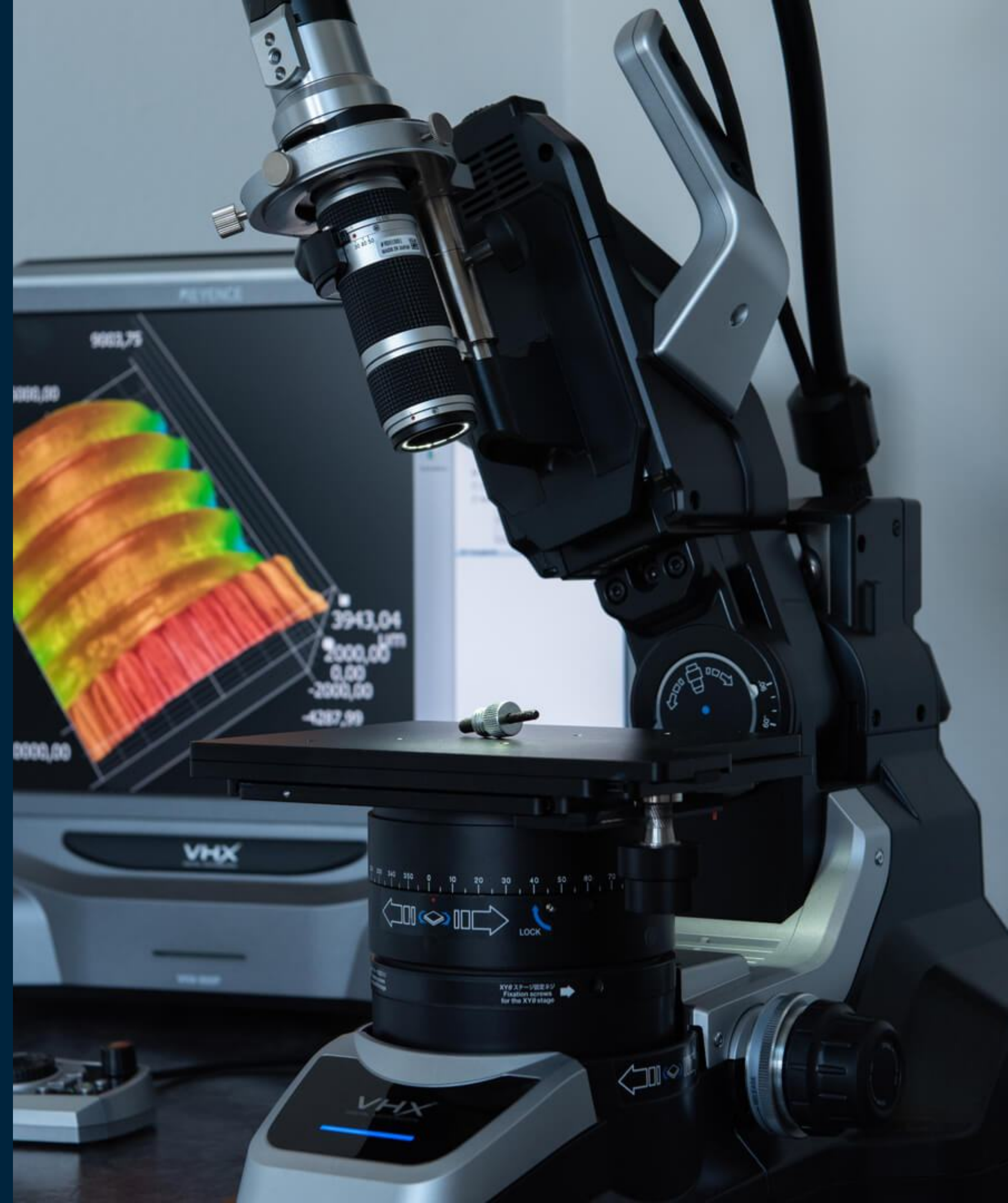
- Vickers destructive hardness testing



During the inspection:

Reporting & documentation

- Regular interaction and exchange with you
- Conducting pareto and ABC analyses
- In case of abnormalities: image documentation & measurement of profiles for immediate coordination
- Regular follow-up training of our staff
- Extensions / modifications to the error catalog
- Sampling of the scrap and preparation of error detection cards for each order



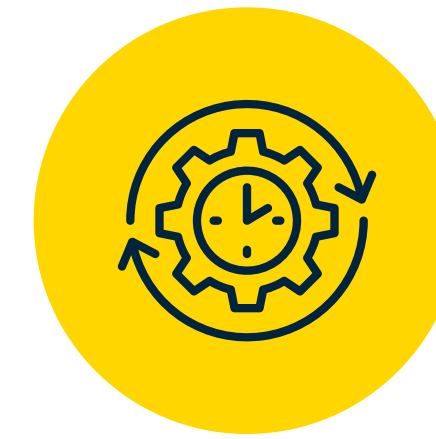
WE ENSURE YOUR QUALITY

Because
the trained eye
sees more

Your reasons for choosing Technomix



Short-term and swift
order processing



Automation
possibilities



Specially selected
and trained
inspection staff



Quick damage analysis
through precise
documentation



Early discovery of
new defects



Universally applicable
also for small batches